

SysHook

Version 1.5

LEGAL STUFF :

Copyright

SysHook is Copyright 1993 Leo Sutic. All rights reserved. Other trademarks are the property of their respective holders.

"It's not my fault" dept.

DISCLAIMER OF WARRANTY

THIS SOFTWARE AND MANUAL ARE SOLD "AS IS" AND WITHOUT WARRANTIES AS TO PERFORMANCE OF MERCHANT ABILITY OR ANY OTHER WARRANTIES WHETHER EXPRESSED OR IMPLIED. BECAUSE OF THE VARIOUS HARDWARE AND SOFTWARE ENVIRONMENTS INTO WHICH THIS PROGRAM MAY BE PUT, NO WARRANTY OF FITNESS FOR A PARTICULAR PURPOSE IS OFFERED. GOOD DATA PROCESSING PROCEDURE DICTATES THAT ANY PROGRAM BE THOROUGHLY TESTED WITH NON-CRITICAL DATA BEFORE RELYING ON IT. THE USER MUST ASSUME THE ENTIRE RISK OF USING THE PROGRAM. ANY LIABILITY OF THE SELLER WILL BE LIMITED EXCLUSIVELY TO PRODUCT REPLACEMENT OR REFUND OF PURCHASE PRICE.

SHAREWARE FEES AND LICENSE AGREEMENT

FEES / AVAILABILITY

<u>Item</u>	<u>Filename</u>	<u>How to get the latest version</u>	<u>Fee</u>
SysHook executable+ documentation	SYSH.EXE	CompuServe IBM Systems/Utilities Forum (GO IBMSYS) Library Section 4 : Multitasking Ziff Software/Utility Library GO SOFTLIB	\$5.00

LICENSE AGREEMENT

The SysHook code and documentation are licensed by Leo Sutic only to legal users who have registered their copy by sending the \$5.00 shareware fee+ the registration form to:

Leo Sutic
Stavangergatan 20
S-164 33 KISTA
SWEDEN

The registration form is in REGISTER.TXT. PLEASE FILL IT IN! If you don't tell me your name and CompuServe user ID, I cannot inform you about updates, bug fixes etc.

If you have obtained SysHook from a friend, a BBS other than Compuserve, or through any other means and have not registered your copy, please do so.

By legally registering the source code, you agree to be bound by the terms and conditions stated below. If you cannot agree to these terms, please destroy this software!! (Or pass it on to someone else you think might be interested).

TERMS AND CONDITIONS

1. This utility program is brought to you as SHAREWARE via Compuserve. You may distribute this software to your friends, or send it to non-profit single-site BBS's, as long as all of the documentation is packaged with the executable file, and NO PROFIT IS GAINED FROM SUCH DISTRIBUTION. The author reserves the sole right to personally upload this file to national or international networks and information services, and retains sole ownership of all code and documentation.
2. Since this is a shareware program, the author STRONGLY encourages users to distribute SysHook to their friends, as long as all of the documentation is included, and this license agreement remains part of this file.
3. Registering SysHook not only gives you the legal right to retain possession of these files and use them on your computer, it also gives you the rights to download (or to let a friend download, and give you) all future editions of SysHook at no extra charge.

Support

When I receive your payment I will add you to the list of registered owners. It also means that I will be whole lot nicer to you than to non-registered owners if you contact me on Compuserve! <only kidding>

Unfortunately, the **only** means I have to correspond with users is on Compuserve, which means if you want to ask a question or get help with a problem you MUST contact me on-line. I cannot answer personal requests via U.S. mail, since it would be too expensive.

Leo Sutic
Compuserve ID 100040,600

PROGRAM DESCRIPTION, INSTRUCTIONS & HOW-TO

What is SysHook ?

SysHook is a small utility that adds two menu items to every program's system menu (See below). These menu items allow the user to run programs without having to switch to Program Manager every time. I.e you can run Microsoft Word full-screen and start the calculator without having to first switch to Program Manager.

Why SysHook ?

If any of you want to know what hooks have to do with system menus, read this.

Windows generates messages all the time. When you move the mouse, Windows sends a message to all applications informing them of this. In order to append the two menu items, SysHook must intercept the message that Windows generate every time a user clicks on a menu. The only way of doing this is

to install "hooks" in Windows. Hence the name "SysHook".

System Requirements

SysHook ABSOLUTELY REQUIRES the following :

IBM-Compatible computer

Windows 3.1 or later.

How to install SysHook

By now you should have unpacked the archive. The following files should be included in it:

README.1ST - Last-minute information.
REGISTER.TXT- Registration form
SYSHLIB.DLL - SysHook Dynamic Link Library (DLL)
SYSHOOK.DOC - This file.
SYSHOOK.EXE - SysHook main program.

Copy the files to a directory of your choice.
Let's assume that you copied the files to C:\SYSHOOK

Now, start Microsoft Windows 3.1 or later. Select a group to place SysHook in. On the Program Managers menu bar, select File. Select New. Press OK. Type 'SysHook', press <Tab>, type 'C:\SYSHOOK\SYSHOOK.EXE', press <Tab>, type 'C:\SYSHOOK'. Press <Enter>.

That's it !

Now, to start Syshook, double-click on the SysHook icon. You probably won't notice anything. That's OK. SysHook is up and running. Try clicking on Program Managers system menu. You should see three new menu items :

```
|_____|
| Always on top |
|_____|
| Program groups >|
| Run a program... |
|_____|
```

Always on top:

This command works exactly like WinHelp's Always on top command. When you execute this command, the window will remain on top of ALL other windows even when it is inactive. Try this :

- 1) Start Windows Write (or Notepad).
- 2) Use SysHook to start the Calculator.
- 3) Select Always on top in Calculator's system menu.
- 4) Switch back to Write (or Notepad).

The Calculator will remain on top.

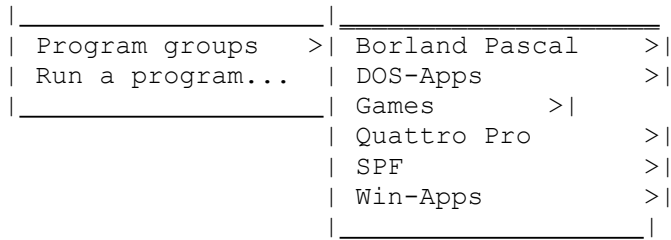
- 5) Click on the Calculator's system menu ONCE (don't close it).

You should see something like this :

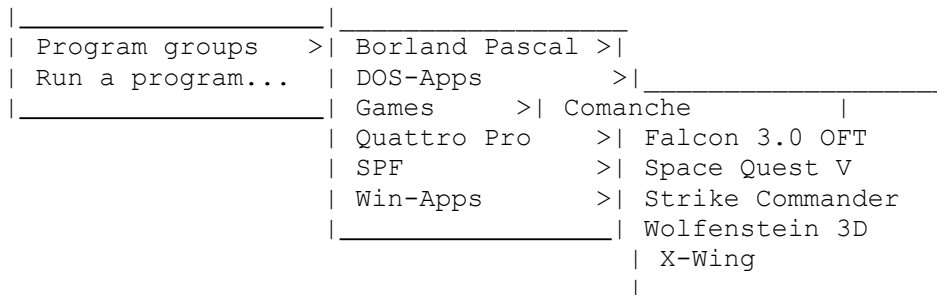
```
|_____|
| ✓Always on top |
|_____|
```

Program Groups:

When you click on this menu item, you will see a list of your Program Manager groups.

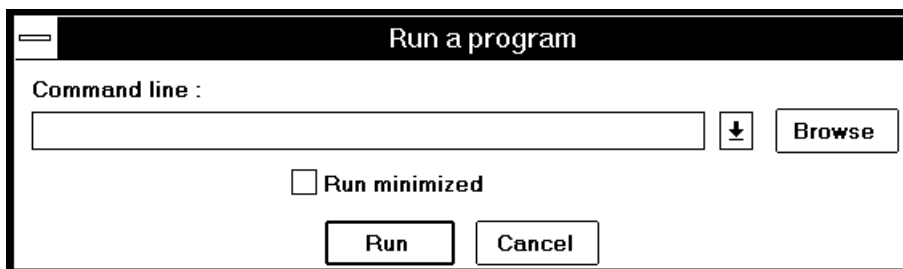


Click on one of them to see a list of all the group's items. Click on one item to run it.



Run a Program:

This is exactly like Program Manager's File|Run command. You will be shown a dialog box that looks like this:



Command line:

Here you type in the name of the program you want to run. For example C:\BP\README.COM. Press the down arrow to see a list of all the programs you have run from SysHook this session.

Browse:

If you don't know the name or path to a program, Browse will give you a directory listing of all drives. Select a program and press OK.

Run minimized:

Check this checkbox if you want to run the program minimized as an icon.

Run:

Press this button to run the program.

Cancel:

Cancels everything and takes you back where you came from.

KNOWN PROBLEMS

SysHook WON'T run with Borland's Quattro Pro for Windows. QPW changes it's menus and overwrites SysHook's menu items.

LAST WORDS

If you find a bug in SysHook, or would like to see a new feature implemented, contact me! (the author).